



Our **Engine Parts Repair** service covers more than 2500 part numbers, with advanced coating, brazing, welding, machining and additive manufacturing capabilities, for aerospace and industrial markets.

Revima
ENGINE PARTS REPAIR

WWW.REVIMA-GROUP.COM

REVIMA GROUP

- **Leading APU, Engine Parts, and Landing Gear MRO provider**
- **60+** years of MRO expertise
- **> 800** employees
- **10 000+** landing gears repaired
- **14 000+** APUs repaired
- **Approved PART 145** by numerous Airworthiness Agencies

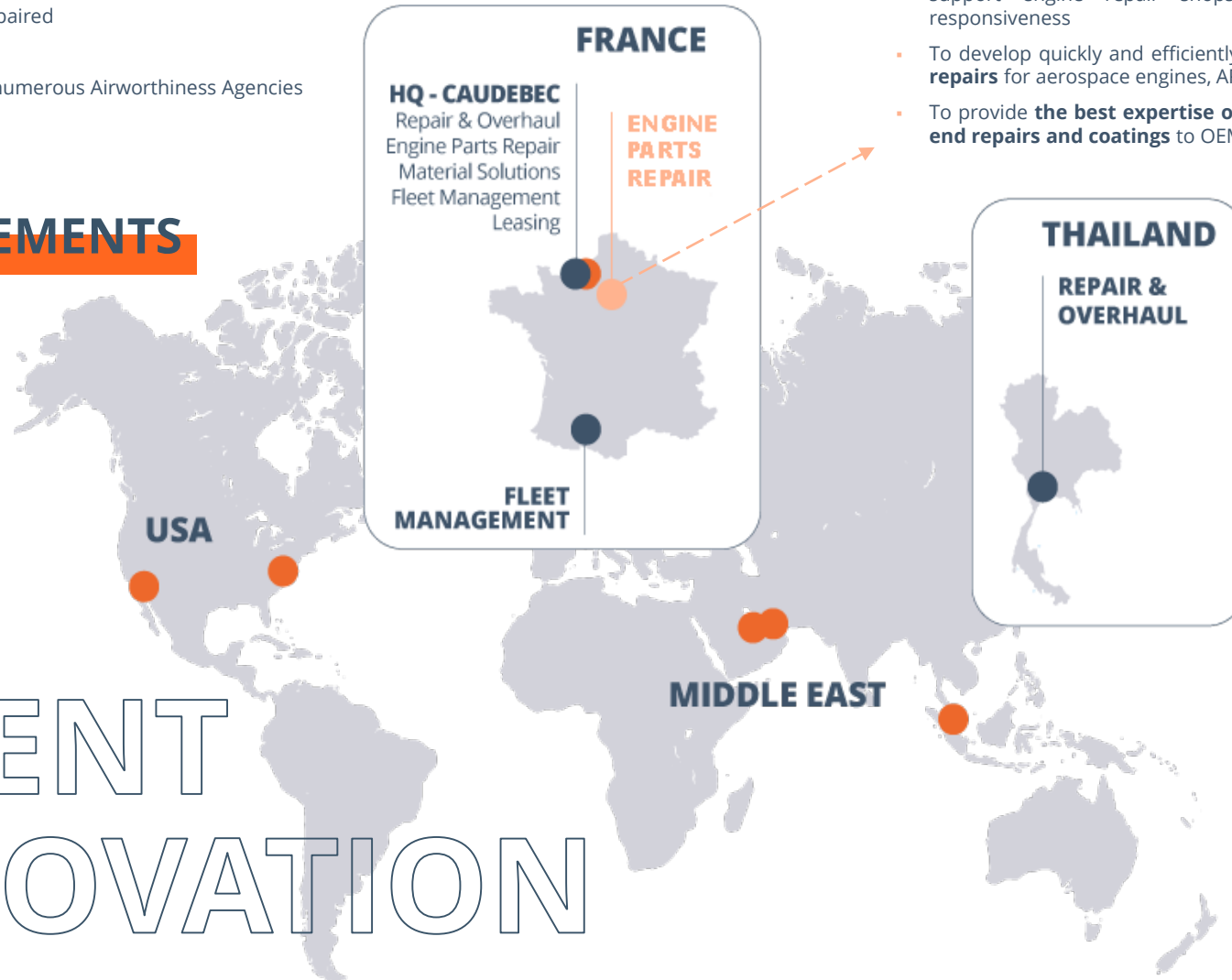
OUR AGREEMENTS

- ISO9100
- ISO14001
- FAR-Part 145
- TCCA
- CAAC 145
- NADCAP

TALENT
INNOVATION
EXCELLENCE

OUR MISSION

- To drive our technology roadmap for **breakthroughs on advanced coatings and additive manufacturing**
- To establish **One-stop-shop best operational performance** to support engine repair shops worldwide with agility and responsiveness
- To develop quickly and efficiently **traditional or new innovative repairs** for aerospace engines, APUs and high-value industries
- To provide **the best expertise of Engineering Services for high-end repairs and coatings** to OEMs



● FACILITIES

● CUSTOMER SERVICE REPRESENTATIVES

INSPECTION

NDT : CMM, FPI, XRAY, SEM
Airflow
Massflow
Degreasing
Acid stripping
Chemical coating removal
Heat treatment : solution anneal



SPECIALIZED
REPAIRS

REPAIR PROCESSES

FIC Cleaning
Brazing
Welding
Machining
Heat treatment



SHEET METAL

DIFFUSION COATING

Aluminisation (pack or VPA)
CrAl - Chromaluminisation (pack) or
Chromisation
PtAl - Platine



OVERLAY COATING

Thermal Barrier
Abradables
Hardfacing



COATING

HEAT TREATMENT

Hardening
Polishing

NEW

Combustion chambers

Exhaust systems and ducts

Pipes

Large dimension exhaust nozzles

Stainless steel, Titanium, Nickel welding

ENGINEERING SERVICES

A DEDICATED **ENGINEERING TEAM**



Design

Co-develop repairs and/or coatings



Manufacturing engineering

your project of varying complexities



Repair operations on site

end-to-end solutions



Support

multi-industries -
Aerospace & Defence -
Turbine Engine industry



Laser cladding

INCO 718 & 713,
Waspaloy, Titanium,
Stainless steel 316L



Industrial Gas Turbine

component - custom-made products

OUR SERVICE

- 2 PhDs specialized in material Laser Melt Deposition (3D)
- 3 project engineers for co-development of new repairs and new coatings
- Nadcap certified laboratory.

OUR INDUSTRIAL CAPABILITY (ANNUAL)



**AERO ENGINE
PARTS REPAIRS**
overhauls Part145



**SURFACE TREATMENT
COATING**



CR+AL POWDER



**ADDITIVE
MANUFACTURING**



**TURBINE SEAL SHAFTS
FELT METAL**



**SHEET METAL
PARTS**

OUR CAPABILITIES



SPECIALIZED REPAIRS - PW100 / PW200 / PW901 APU / PW980 APU / PT6 / JT15D / PW4000/ CFM56 / CF6 / M53 / GE-90

NADCAP DIFFUSION COATING (Aluminium / Chromium) & Overlay Coating (APS)- Aneto / Arriel / RTM322

NDT (X-Ray, FPI, CMM) & NADCAP LABORATORY (SEM, Optical, Chemical)

LASER ADDITIVE MANUFACTURING (LMD on Inco718 /Inco713/ Inco625/Titanium/Waspalloy) – PW100 / PT6/ Industrial Gas Turbine markets



- A dynamic and committed team with over 50 years of aeronautical expertise
- People turnover < 3%
- Average experience > 20 years

EMPLOYEES EMPOWERMENT

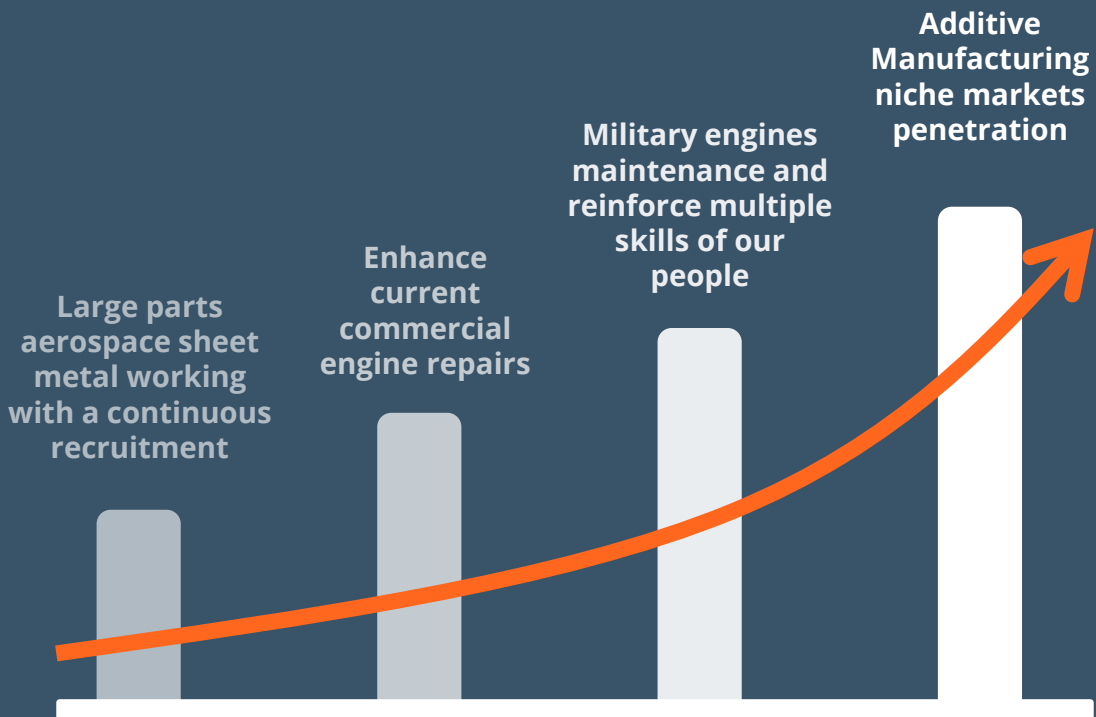
- Internal reference trainers (safety, aerospace, market, technical)
- Employee recognition programs
- Wellness development programs



OUR STRATEGY



GROWTH PERSPECTIVE



CONTACT US

REVIMA SOA

13 Avenue des gros Chevaux Z.I. Vert Galant
95310 Saint Ouen L'aumône, FRANCE

+33 (0) 1 34 40 36 36 | soa-customers@revima.com | WWW.REVIMA-GROUP.COM